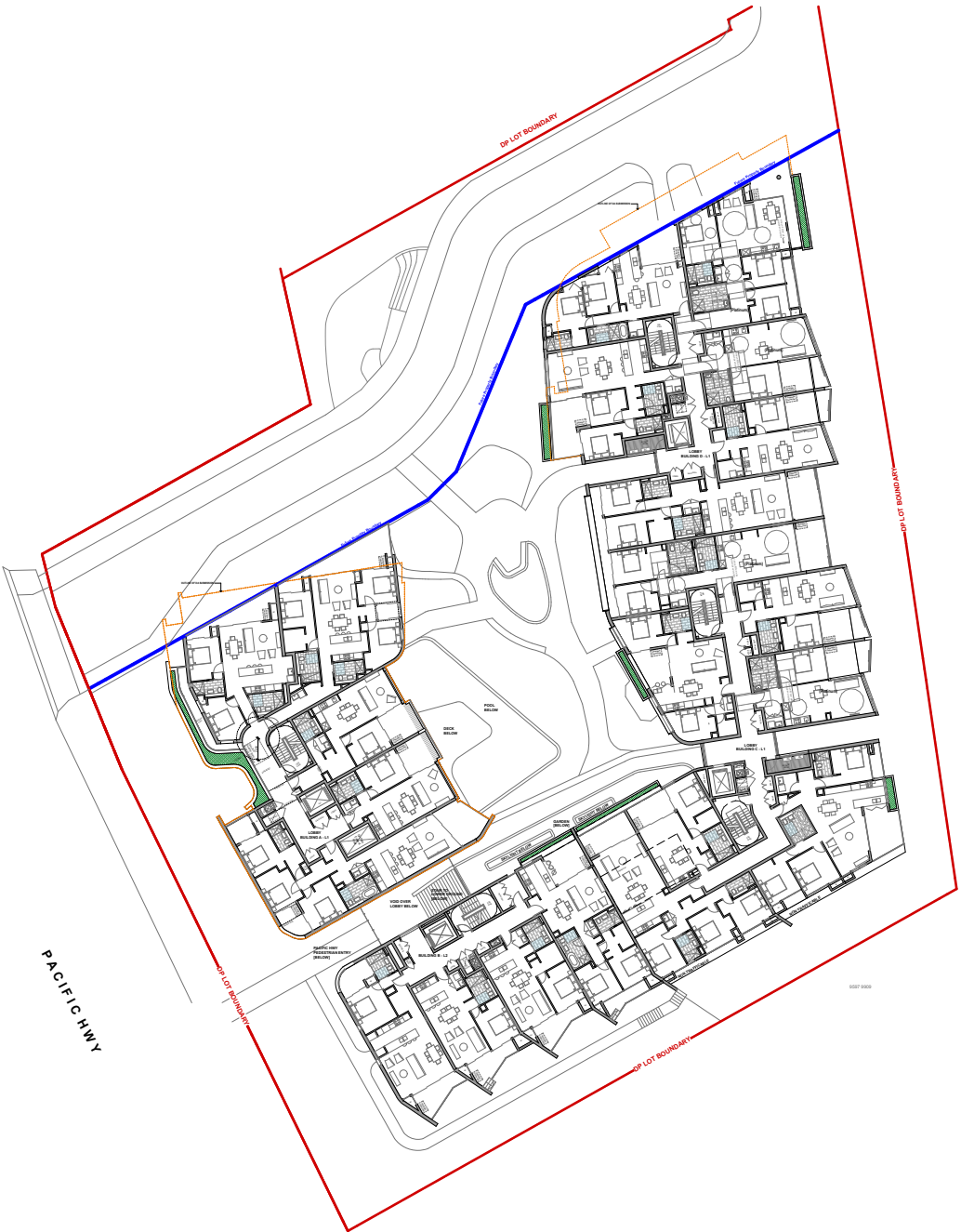


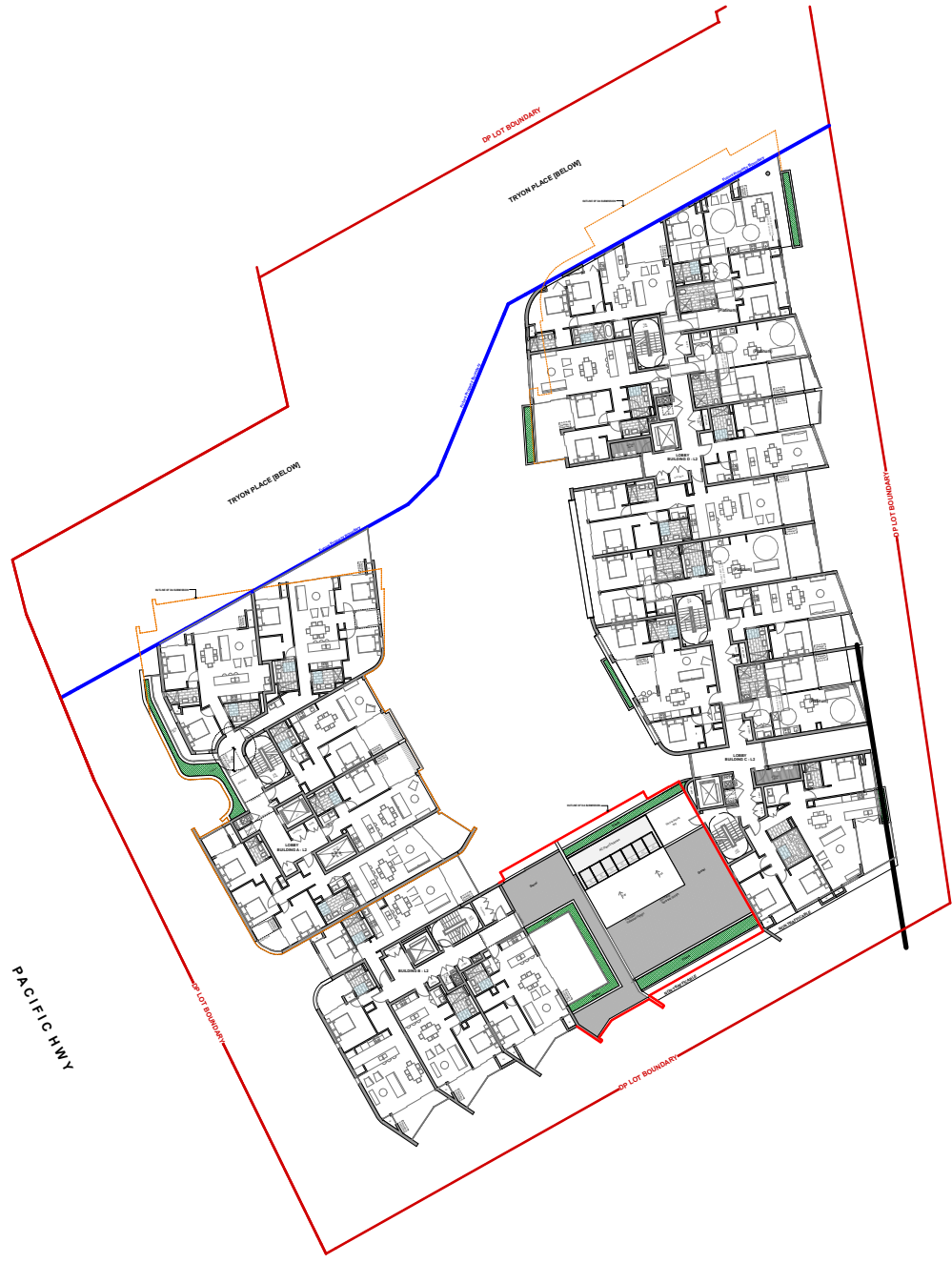
Basement 01 / Lower Ground Floor



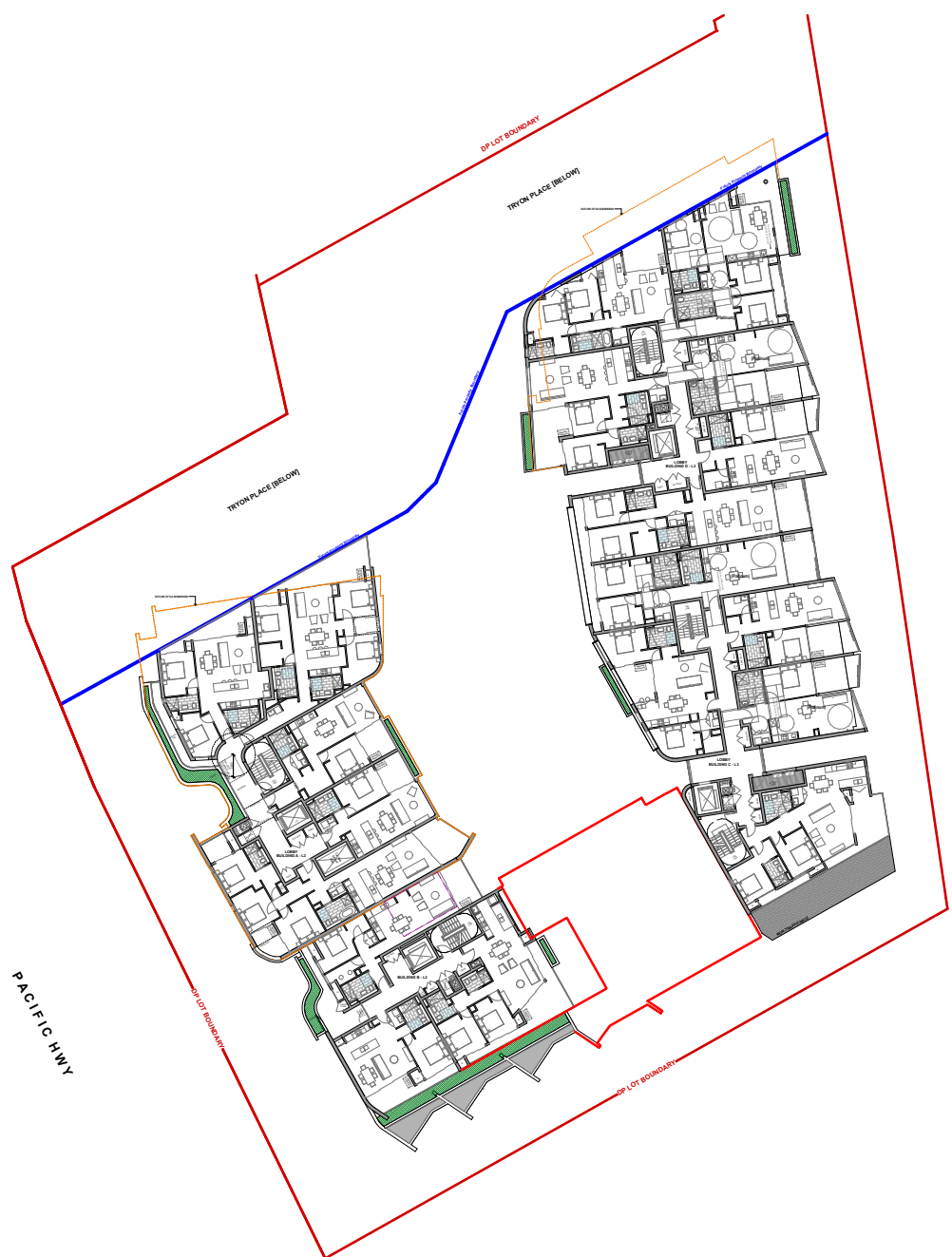
Ground



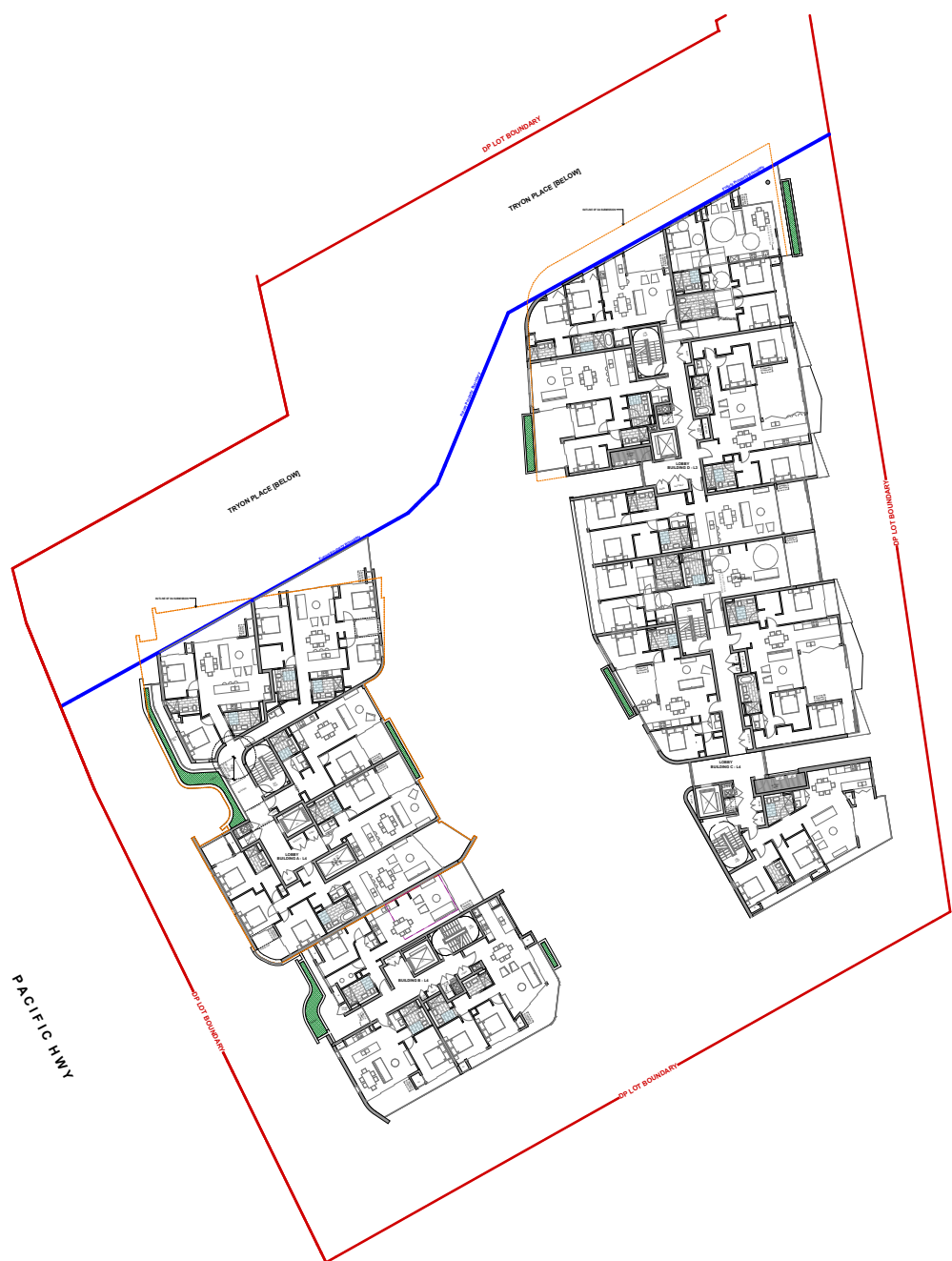
Level 01



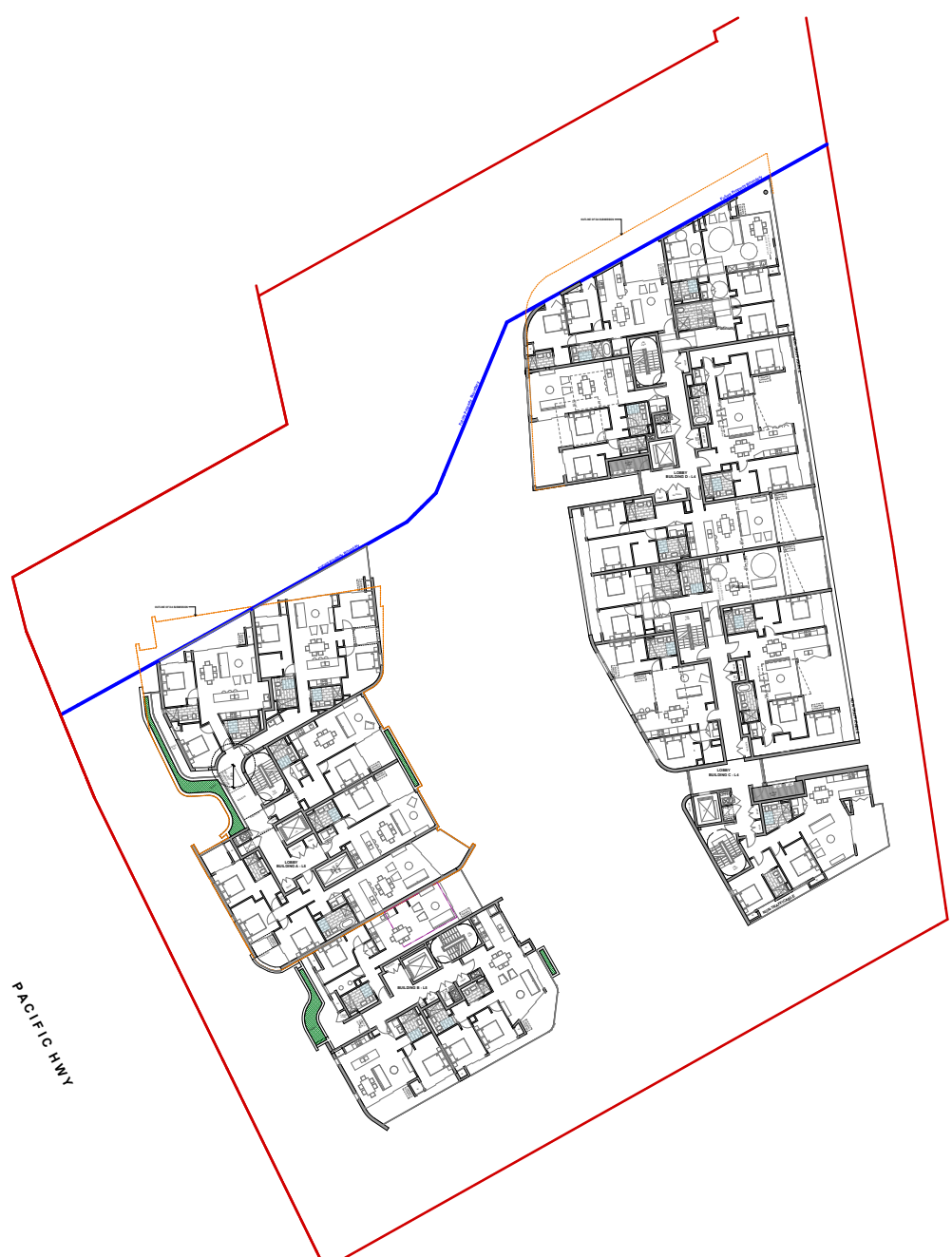
Level 02



Level 03



Level 04



Level 05



Level 06 / Roof

Total site Area : 5848.5 SQM	
Total Area Required : 2339.4 SQM (40%)	
Landscape Area Proposed	
Home Story	Area
Basement 01 / Lower Ground Floor	1,316
Ground	522
Level 01	28
Level 02	54
Level 03	47
Level 04	33
Level 05	19
Level 06 / Roof	567
	2,586 m <sup>2</sup> (45.2%)

Rev	Description	Drawn	Date
C	DA Amendments	BPGJ	03.07.19
D	DA Amendments	BPGJ	12.07.19
E	DA Amendments	BPGJ	17.07.19
F	DA Amendments	BPGJ	26.07.19
G	DA Amendments	BPGJ	06.08.19
H	DA Amendments		11.11.19